



DM AB 2015



## Amphibian Tool Carrier







Truxor is a multifunctional amphibious machine available with a wide range of tools and accessories. The amphibious nature of the Truxor allows access to areas normally inaccessible to conventional machines. Truxor is the ideal solution for work in lakes, canals and other wetland habitats. The weight distribution system gives low ground pressure and floating capacity to the machine, offering unique opportunities for work in sensitive environments.

Truxor's flexibility, allows it to operate on water, in the shallow margins and on dry land at the waters edge. It's lightweight construction is perfect for working in sensitive environments such as nature reserves, conservation areas, canal banks even golf courses where conventional contractor's machinery may cause damage. The versatility of the Truxor allows it to effectively carry out a wide range of tasks including reed cutting and collection, silt pumping, dredging, channel excavation, oil spill clean-up, and much, much more.

Truxor's precision and flexibility give the operator full control in both narrow channels, around bridges and other water hazards. The machine turns easily on its own axis and will stop in less than half a metre from full speed forward.

Tools can be changed quickly and one person can easily operate the machine.

The hydraulic pump has capacity control which means that the total power drain of the hydraulic output is balanced according to the output of the diesel motor. This makes it possible to use tools that require more power. Truxor is also equipped with a suction- type cooling fan with better cooling capacity and lower noise level.

### Tools for Truxor

- Cutter units
- Collection rakes
- Excavator unit
- Dredge pump
- Equipment for cleaning up oil spills
- Wood chipper
- Miller
- Hydraulic hammer

### Truxor accessories

- Propeller drive
- Trailer
- Chain gear
- Transport bed

### Truxor 5000 / Truxor 5045

- Ergonomic operator's seat
- Load-sensitive hydraulic system (LS)
- Filter system of the air intake to the cooling unit
- A wide range of tools
- Equipped with work lighting
- Hydraulic tool operation
- Electrically heated operator's seat
- Adjustable hydraulic outlet flow

The machines are delivered with standard hydraulic oil, ISO WG 46. Upon order they can be delivered with environmentally-considerate oil (Panolin).







Ergonomic operator's seat with joysticks for operation/control of the machine and its tools.



The air intake to the radiator is equipped with a filter that prevents the cooler cells from being blocked by insects and foreign particles.



Hydraulic outlet for operation of tools. Operated by an on/off joystick as well as min/max tool speed.



Openable engine casing with a tool box inside the engine compartment.



The dashboard shows hydraulic pressure, fuel level, motor temperature, hydraulic oil temperature, a chronometer as well as the engine speed in RPM.



Easy-to-access diesel tank, radiator and hydraulic oil tank for control and refilling of fluids.



The DM bracket makes tool change easy.



Tools for day-to-day service are included.



The Truxor's weight distribution system minimizes ground pressure. Truxor can be driven across a lawn without any damage to the grass.



The movable driver's cab is hydraulically adjusted and works as counterweight during heavy lifts in water.







## TRUXOR DM 5000

The Truxor DM 5000 is a reliable and versatile machine, the result of more than 20 years of designing amphibian equipment.

Truxor DM 5000 is a good choice for cutting and collection of water plants. When using more power-demanding tools (such as dredge pumps/flail mulchers), the capacity is a little lower than the capacity of Truxor DM 5045.

The machine has a CAN bus technology system which makes it easy to operate.

### Truxor DM 5000 Technical Specifications

<b>Motor:</b> Kubota D1305 diesel 29.1 hp/3000 RPM. Environmental class Interim TIER 4/Stage 3 A. Euro class 3 Automatic stop function if the engine overheats or the oil pressure is too low. The machine is equipped with a warning system for operation at maximum slope, which stops the diesel motor automatically if the maximum slope is exceeded.	<b>Right joystick:</b> Lifting, tilting, weight distribution Hydraulic outlet 3 – work pressure 150 bar. Adjustable flow 0-13.2 gal/min, 16.6 hp
<b>Cooling system:</b> Combi radiator for the motor and the hydraulic system. The air intake of the radiator is equipped with a filter (prevents the accumulation of dirt in the radiator cells). Front lift: Lifting power 551.2 lbs, DM bracket for fast change of tools.	<b>Driving speed:</b> 0-110 yd/min.
<b>Driver's seat:</b> Ergonomically designed, adjustable driver's seat with electrically heated seat, adjustable steering.	<b>Front lift:</b> 551.2 lbs lifting power, DM bracket for fast tool change.
<b>Electrical system:</b> 12 V, 40 A generator , 45 Ah battery.	<b>Caterpillar track:</b> (paddle track) of rubber.
<b>Dashboard:</b> engine speed (RPM), motor temperature, control lights, hydraulic oil temperature, hydraulic pressure and fuel gauge.	<b>Material:</b> Pontoons manufactured of saltwater-resistant aluminium. Hot-dip galvanised steel structure.
<b>Hydraulic system:</b> Hydraulic tank 14 gal, hydraulic system volume 18.49 gal. Load-sensitive hydraulic pump, torque - 56.05 lbf Control system with CAN bus signalling technology.	<b>Dimensions:</b> Length 15.4 ft, width 6.8 ft, height 6.9 ft. <b>Weight:</b> 3064 lbs.
<b>Left joystick:</b> To operate the machine. Hydraulic outlet 1 – work pressure 140 bar, adjustable flow 0-6.6 gal/min. Hydraulic outlet 2 – work pressure 130 bar, adjustable flow 0-2.9 gal/min.	<b>Equipment:</b> 4 work lights, service tools Truxor DM 5000 is delivered CE marked. <b>Truxor DM 5000 item no. 94-5000</b> Mineral-based hydraulic oil <b>Truxor DM 5000 item no. 94-5000E</b> Environmentally friendly hydraulic oil Panolin. (18.5 gal)





## TRUXOR DM 5045

The **Truxor DM 5045** is a professional high-performance machine. It has a Turbo diesel 45 hp motor. The larger motor with higher torque provides more power for the machine and its tools.

The **Truxor DM 5045** has a hydraulic system equipped with a patented cyclone tank that offers more efficient ventilation thereby ensuring slower oxidation of the oil.

The weight has been reduced thanks to the smaller amount of oil used, which increases the performance of the machine.

The **Truxor DM 5045** has a hydraulic tank with a level gauge as well as an automatic motor stop when the oil level gets too low. This significantly reduces the risk of leakage, which is an advantage in water reservoirs and other sensitive areas where oil spills must be avoided.

### Truxor DM 5045 Technical Specifications

**Motor:** Kubota V1505-T turbo diesel 44.9 hp / 3000 RPM. Environmental class Interim TIER 4/Stage 3 A. Euro class 3 Automatic stop function if the engine overheats or the oil pressure is too low. Warning system for driving at maximum slope that stops the diesel motor automatically if the maximum slope is exceeded.

**Cooling system:** Combi radiator for the motor and the hydraulic system. The air intake of the radiator is equipped with a filter (prevents the accumulation of dirt in the radiator cells).

**Driver's seat:** Ergonomically designed, adjustable driver's seat with thermostat-controlled electrically heated seat, foldable cab, adjustable steering.

**Electrical system:** 12 V, 60 A generator, 45 Ah battery, adjustable thermostat-controlled operator's seat.

**Dashboard:** engine speed (RPM), motor temperature, control lights, hydraulic oil temperature, hydraulic pressure and fuel gauge.

**Hydraulic system:** Hydraulic tank with cyclone technology – 5.02 gal. Hydraulic system volume – 9.51 gal. Load-sensitive hydraulic pump, torque 84.82 lbf. Control system with CAN bus signalling technology. Automatic stop if the hydraulic tank level gets too low.

**Left joystick:** To operate the machine. Hydraulic outlet 1 – work pressure 140 bar, adjustable flow 0-6.6 gal/min. Hydraulic outlet 2 – work pressure 130 bar, adjustable flow 0-2.9 gal/min.

**Right joystick:** Lifting, tilting, weight distribution. Hydraulic outlet 3 – work pressure 200 bar. Adjustable flow 0-15.8 gal/min, 22.2 hp

**Driving speed:** 0-110 yd/min.

**Front lift:** 551.2 lbs lifting power, DM bracket for fast change of tools.

**Caterpillar track:** (paddle track) of rubber.

**Material:** pontoons manufactured of saltwater-resistant aluminium. Hot-dip galvanised steel structure.

**Dimensions:** Length 15.4 ft. Width 6.8 ft. Height 6.9 ft.  
**Weight:** 3086 lbs.

**Equipment:** 4 work lights, service tools Truxor DM 5045 is delivered CE marked.

**Truxor DM 5045 item no. 94-5045**  
Mineral-based hydraulic oil

**Truxor DM 5045 Item no: 94-5045E**  
Environmentally friendly hydraulic oil Panolin (9.51 gal).



## Which cutting tool should I choose?

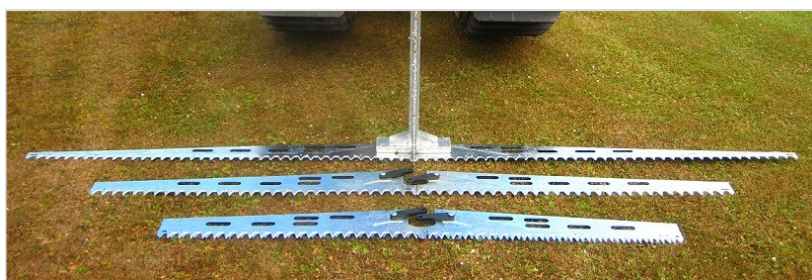
We offer five different cutter units for our Truxor machines. The Doro cutter 3090 is recommended for water depth of more than 30 cm. For cutting operations on land use the ESM cutters. The four ESM cutters are equipped with double-action Busati knife systems which has sufficient capacity to handle heavy vegetation.

## Collection – just as important as cutting

Cut water plants left in the water can act as fertiliser. This is why we recommend that all cut materials be collected and removed. Harvesting and removing water plants helps prevent eutrophication.



## Doro Cutter 3090/3091



The Doro Cutter 3090 is the perfect solution for common reed cutting in most aquatic environments. The cutter is hydraulically operated and easy to attach to Truxors attachment bracket. The cutter has two work depths, 1 or 1.4 m. The knives are replaceable with a working width from 2.2 to up to 4 metres.

The Doro Cutter 3090 must be used in water, which lubricates the knives during work and is therefore not suitable for use on land. A stone release system protects the knives should they come into contact with solid objects. The Doro Cutter 3091 is the same model but its cutting depth has been increased to 1.4 m. The knives of the cutter are delivered with a working depth of 4 metres.

### Doro cutter 3090/3091 Technical specifications

#### Knives (4 m) included Technical specifications

##### Doro cutter 3090

Working width:	3090: 13.1 ft
Weight:	3090: 145.5 lb
Cutting depth:	3.3 ft
Item no.	95-3090T

##### Doro cutter 3091

Working width:	3091: 13.1 ft
Weight:	3091: 154.3 lb
Cutting depth:	4.6 ft
Item no.	95-3091T

#### Accessories: Doro Cutter 3090/3091

Working width:	
7.2 ft	Item no. 95-70022
9.8 ft	Item no. 95-70030
13.1 ft	Item no. 95-70040





### Doro Cutter ESM 2200

The Doro Cutter ESM 2200 cuts and collects plants at the same time. It is recommended for smaller waterways such as golf ponds where space is scarce and the water flow can make collection difficult. When only the cutting function is to be used the collection net on the cutting bucket can be removed. The machine is equipped with double-action Busati knives.

**Working width:** 6.9 ft  
**Weight:** 242.5 ft  
**Width:** 7.4 ft  
**Cutting depth:** 2.6 ft  
**Item no.** 90-ESM2200



### Doro Cutter ESM 1700

The Doro Cutter ESM 1700 is mounted on the side of Truxor making it possible to cut along channels and canals. The angle of the cutting unit is adjustable. The knives are double- action Busati.

The Doro Cutter ESM 1700 is equipped with a stone release system that protects the knives when they encounter solid objects. The cutter has a hydraulic side arm with built-in adjustable extension for greater range.

**Working width:** 5.6 ft  
**Weight:** 260.1 ft  
**Cutting depth:** 1.6 ft  
**Item no.** 90-ESM1700



### Doro Cutter ESM 2100

The Doro Cutter ESM 2100 is a front-mounted cutter with double-action Busati knives. In comparison to the single-action knives, the double-action knives are more efficient and have a higher cutting capacity. The ESM 2100 is recommended when the water depth is less than 50 cm. A stone release system protects the knives from stopping when coming into contact with solid objects.

**Working width:** 6.9 ft  
**Weight:** 158.7 lb  
**Cutting depth:** 1.6 ft  
**Item no.** 90-ESM2100



### Doro Cutter ESM 2150

The Doro Cutter ESM 2150 is a cutting aggregate for wetlands and subsoil water. The Double-action Busati knives have a larger opening. A direct-drive hydraulic motor with double-action knives, which increases the capacity so that even coarse plants and individual bushes of up to 0,59-0,79 in can be cut. A stone release system provides overload protection when the knives stop against solid objects.

**Working width:** 7,054 ft  
**Weight:** 251.3 lb  
**Cutting depth:** 0.98 ft  
**Item no.** 82-ESM2150





### Reed rake

Used for the collection and transportation of plants after reed cutting. It has foldable side sections. The rake can be supplemented with sieve plates for collection of waste, algae and absorbents (oil spill clean-up).

**Working width:** 6.5 or 11.5 ft.  
**Weight:** 132.3 lb  
**Item no.** 94-22500

Sieve plates, reed rake accessory.

**Weight:** 28.7 lb  
**Working width:** 6.5 or 11.5 ft  
**Item no.** 94-29600



### Lifting rake

This rake is the perfect choice when cleaning the shore and lifting heavy objects. The solid forks can lift stones, trees and plants with roots found along the shoreline and at the bottom of the lake. The forks are adjustable making it possible to reduce the working width.

**Working width:** 6.5 ft  
**Weight:** 90.39 lb  
**Item no.** 94-68000



### High-tip rake

This rake has a higher tip, which facilitates the loading of trailers or barges. The rake is made of perforated plating which allows it to collect smaller particles such as waste, algae and absorbents (oil spill clean-up).

**Working width:** 7 ft  
**Weight:** 154.3 lb  
**Max. lifting height in water:** 4.3 ft  
**Max. lifting height on land:** 5.6 ft  
**Item no.** 94-47700



### Rake with sprung pins

Thanks to the sprung pins, the material can be moved in the water when the shoreline is uneven. The floating material can then be collected with the help of the standard rake.

**Working width:** 8.2 ft  
**Weight:** 88.18 ft  
**Item no.** 94-47600





The Doro miller is used for restoring wetlands, shorelines and floors. The miller is available in different working widths. The miller heads are replaceable and can be dismounted from the drive unit. The drive unit is mounted on the lifting arm. It is recommended only in wetlands with organic materials. The miller heads are not included.



Doro Miller Technical Specifications

Drive unit		Miller heads set	
Weight	83,77 lbs	Working width:	2,62 ft
Engine speed:	0-150 RPM	Weight:	70,55 lbs
Torque: max.	max 516.3 lbf	Item no.	72-12200
Length:	2,95 ft		
Item no.	72-13500		
Miller heads set		Knife mills set	
Working width:	3,93 ft	Working width:	2,62 ft
Weight:	99,2 lbs	Weight:	77,16 lbs
Item no.	72-12300	Item no.	72-13600



## Grip Bucket and Grip



Lift bracket

The Grip bucket and the Grip are for lifting plants and sediments from the bottom of a lake or along shore lines. The tools can be combined with a Telescopic arm or a Lift bracket. With the Telescopic arm installed, the tools have a working depth of 5,57 ft.

If the work involves mainly shorelines and shallow water, the Grip and Grip bucket can be attached to the Lift bracket. The working depth will then be approx. 2,95 ft. The Lift bracket is lighter in comparison to tools mounted on the Telescopic arm, which provides greater lifting power.

### Grip Bucket and Grip

Working depth with telescopic arm 5,57 ft.  
Working depth with DM bracket approx. 2,95 ft.

<b>Weight, Grip bucket:</b>	167,55 lbs
<b>Weight, Grip:</b>	88,18 lbs
<b>Weight, Telescopic arm:</b>	72,75 lbs
<b>Weight, Lift bracket:</b>	19,84 lbs
<b>Item no., Grip bucket:</b>	94-58100
<b>Item number, Grip:</b>	94-59500
<b>Item number, Telescopic arm:</b>	94-58400
<b>Item no. Lift bracket:</b>	94-60600



Telescopic arm

## Wood Chipper



The wood chipper rotor has two transversal knives. The rotor feeds the wood and air blows the material out via the adjustable exhaust. The wood chipper is hydraulically operated and is delivered with an adjustable bracket which facilitates the feeding process when working on slopes. The tool is an excellent supplement when clearing close to wetlands, lakes and waterways.

### Wood Chipper

**Weight:** 436,5 lbs  
**Capacity:** 2,95 inch  
**Feed size:** 19,7x15,7 inch  
**Item no.** 94-104300



The **Doro Digger** is an excavation aggregate and combined mounting system for other tools. The digging arm is made of high-tensile steel and has built-in brackets for attaching dredge hoses and additional hydraulic tubing.

The Doro Digger is designed to maximize the lifting height, digging depth and reach. The digging aggregate has a swing system equipped with hydraulic cylinders that provide solid flywheel capacity. Doro Digger is equipped with semi-automatic quick bracket DM X3 for fast tool change.

Examples of Doro Digger accessories are excavation buckets, dredge pumps, flail mulchers and cutting knives.



Doro Digger with Doro Cutter ESM 1900

The **Doro Cutter ESM 1900** effectively cuts vegetation and bushes on shorelines and in wetlands. The ESM 1900 can cut most types of plants and bushes up to 1 inch in diameter. The knife beam has knives on both sides and the plants are cut from both directions by the swinging motion of the digging arm. The large working width reduces driving distances in wetlands and minimizes soil surface damage. The ESM 1900 is not recommended for use under the water surface.



Doro Digger with Orsi flail mulcher.

**Orsi flail mulcher.** A perfect tool that chops vegetation without the need to collect it afterwards. It is recommended for plants and bushes with a diameter of up to 1 inch.



Doro Digger with excavator



Doro Digger with Doro Pump V3

## Doro Digger Technical Specifications

The maximum depth and reach have been measured from the water surface.

<b>Maximum excavation depth:</b>	9,8 ft
<b>Maximum lifting height:</b>	9,5 ft.
<b>Maximum reach (radius):</b>	13,1 ft
<b>Maximum reach (diameter)</b>	26,24 ft
<b>Maximum turning radius:</b>	180 °.
<b>Maximum depth for outrigger pontoons, stabilisation against the bottom (excavation):</b>	3,3 ft

If the water is less than 0.33 ft deep, the outriggers can be removed. The machine will then be lighter and more flexible for use in wetlands, for example.

<b>Buoyancy of outrigger pontoons</b>	2 x 287 lbs
---------------------------------------	-------------

Valve package equipped with two-lever system. Semi-automatic quick bracket DM X3.

Doro Digger cannot be used at the same time as propeller (91-104200). The excavation aggregate is delivered with outrigger pontoons for excavation and assembly parts.

<b>Doro Digger Item no</b>	<b>77-3200</b>
<b>Total weight:</b>	787 lbs
<b>Excavation aggregate</b>	498,2 lbs
<b>Outrigger pontoons</b>	288,8 lbs





The Doro Miller when mounted on a Doro Digger gives a large radius of action. The material can be easily processed and moved using the miller in order to fill uneven ground. Recommended only in wetlands with organic material. The miller heads are not included.

## Doro Miller Technical Specifications

Drive unit:		Miller heads set	
Weight:	68,3 lbs	Working width:	2,63 ft
Engine speed:	0-150 RPM	Weight:	70,55 lbs
Max. torque	max 516,3 lb ft	Item no:	72-12200
Item no:	72-12100		
Set of knife mills		Adapter for mounting of Doro miller to the lifting arm	
Working width:	2,63 ft	Including hydraulic tubing.	
Weight:	77,16 lbs	Item no:	72-13800K
Item no:	72-13600	Weight:	11 lbs



72-13800K



72-12200



72-13600

## Accessories

Doro Digger buckets. Designed for work carried out in water. Made of high-tensile steel. The teeth of the buckets have cutting properties that facilitate excavation of root deposits which are common in water.

1. Bucket, 15,8 gal, weight 81,57 lbs Item No. 77-16800
2. Bucket, 7,9 gal, weight 52,9 lbs Item No. 77-16900
3. Excavator rake, 18,5 gal, weight 59,5 lbs Item No. 77-17000

**Orsi flail mulcher.** Weight 194 lbs, Working width 2,62 ft. Hydraulic operation. Delivered with a hammer knife. Capacity: thicket of up to 1 inch.

Item no: 77-19000

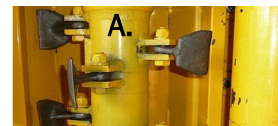
- A. **Hammar** knife for 77-19000  
Item no: 77-023077 (20 pieces needed)

- B. **ESM 1900** delivered with a knife for cutting grass and bushes with a diameter of up to 1 inch. Working width of knife is 6,23 ft. Max reach when mounted on a Doro Digger (diameter): 37,7 ft

Weight 194 lbs  
Item no: 80-10000

Hydraulic tubing, including brackets, for operation of Doro pump V3, Orsi flail mulcher and Doro cutter ESM 1900.

Item no: 77-20000





# Doro Pump V3



The Doro Pump V3 when mounted on a Doro Digger offers extensive control of the dredging accessories. The system has a rotating head and knives mounted on the intake, ensuring an even feed of material into the Doro pump. The wings of the intake system feeds the sediment and minimises the dirtying of the water with the sediment

## Doro Pump V3 technical specifications

Max. capacity:	572 gpm
Max capacity with lifting height:	
3.3 ft	528 gpm
6.6 ft	484 gpm
9.8 ft	440 gpm
The lifting height, hose length, type of sediment etc. all affect the maximum capacity.	
Maximum dredging depth with Doro Pump V3:	11,5 ft
Max. permitted working width with Doro pump (diameter):	13,1 ft (floating machine)
Max. permitted working width at a water depth of up to 1,3 ft: (diameter)	22,9 ft
Max depth, outrigger pontoons, stabilisation against the bottom (dredging):	6,6 ft
Working width infeed:	13,1 ft
Doro pump V3 weight:	194 lbs
Standard set weight:	189,6 lbs

## Doro Pump V3 incl. standard set Item no. 78-2503

### Doro pump V3 standard set:

Delivered with hydraulically operated drill feed and 26,2 ft spiral tubing including couplings, 82 ft flat tubing Ø 4 inch incl. quick couplings and brackets for floaters, 10 floaters, 16,4 ft flat tubing with quick coupling and end nozzle, 1 set of brackets for the dredging hose, outrigger pontoon extensions.



## Accessories

The discharge nozzle can pump sediments sideways when, for example, cleaning channels. It is delivered with replaceable nozzle to modify the sediment flow. Discharge nozzle **Item no. 77-23300, weight: 15,43 lbs**



Flat tubing 4,1 inch (164 ft) **Item no. 78-105**

Camlock, female **Item no. 78-5626102**

Camlock, male **Item no. 78-5646102**

Hose clip 4,33 inch **Item no. 01-110D20**



# Doro Pump



The Doro pump is a hydraulically operated dredge pump with a screw feeder that breaks off and feeds sediment into the pump intake. The Doro pump is easy to attach and changing to another tool takes only a few minutes. The Doro pump is delivered ready for assembly on the lifting arm.

The Doro pump can be delivered with the following accessories: hydraulically operated telescopic extension to increase the dredging depth and facilitate manoeuvring.

## The Doro pump standard kit:

1 hydraulically operated feeding screw, 6 m spiral tubing incl. couplings, 25 m flat tubing Ø 102 mm with camlock quick coupling with buoyancy tube. 10 floaters, 5 m flat tubing with quick coupling and end nozzle, 1 suction nozzle, 1 DM attachment 0.9 m, 1 extension 0.7 m, 1 bracket set for dredging hose.



Suction dredging in pure sand is done using a suction tube which is mounted in the pump intake (the feeding screw is removed). The suction tube is included in the standard kit.

## Doro pump technical specifications

Doro pump with feeding screw: <b>Weight:</b>	207,2 lbs
<b>Dredging depth:</b>	5,25 ft
<b>Working width:</b>	2,62 ft
The Doro pump is supplied with a standard kit.	
<b>Standard set weight:</b>	189,6 lbs
Max. capacity .	572,4 gpm
<b>Max capacity with lifting height:</b>	
1 metre	528 gpm
2 metre	484 gpm
3 metre	440 gpm

The lifting height, hose length, type of sediment etc. all affect the maximum capacity. In order to ensure even sediment flow, knives are mounted on the intake of the pump.  
**Item no. 78-2502**

## Accessories

Telescopic extension <b>Dredging depth: 2,4 m.</b> <b>Item no. 5000</b>	<b>94-58400</b>
Flat tubing 4,1 inch (164 ft)	<b>Item no. 78-105</b>
Camlock, female	<b>Item no. 78-5626102</b>
Camlock, male	<b>Item no. 78-5646102</b>
Hose clip 4,33 inch	<b>Item no. 01-110D20</b>



# Pile Driver DM 350



**Pile Driver DM 350** is a mast with a winch system for lifting and mounting plastic, wooden and metal piles and poles. It is equipped with a Hycon hydraulic hammer which is used in combination with the Pile Driver DM 350 and generates very powerful vibrations, resulting in effective piling in water. The Pile Driver DM 350 is mounted onto the frame bracket of the lifting arm. The X + Y movement is controlled from the operator's seat. The hydraulic hammer is attached to the winch using the bracket for piles or poles. Delivered complete with a winch. Hycon hydraulic hammer is not included.

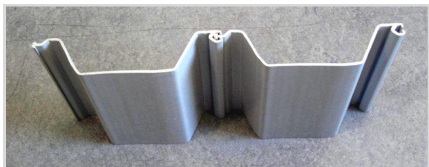
Pile Driver DM 350	
Length	14,75 ft
Weight	63 kg.
X movement:	max 4,72 inch.
Y movement:	max 4,72 inch
Lifting capacity:	286,6 lbs
Max pole/pile length	9,84 ft
Item no.:	71-10600

DM 350 accessories
Mast extension 3.3 ft, weight 13.2 lb
Max lenght pole/pile 13.1 ft
Art. No. 71-10700

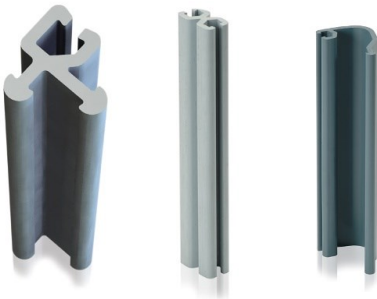


### Hycon hydraulic hammer accessories:

U-profile pile bracket (71-1358), <b>Weight:</b> 26.5 lbs <b>Item no. 71-14800</b>
Round pole bracket, 2,36 inch <b>Item no. 71-4012575</b>
Round pole bracket, 3,15 inch <b>Item no. 71-4012585</b>



Pile, u-profile	
Weight:	Weight: 2.15 lb/ ft²
Width:	Width: 1.02 ft
Material:	Plastic, thickness 0.2 inch
Length 6,56 ft	Item no.71-135820
Length 8,2 ft	Item no.71-135825
9,84 ft	Item no.71-135830
13,12 ft	Item no.71-135840
trim corner 90°	Item no.71-1300
Trim joint. Two-way.	Item no.71-1329
Trim joint. Three-way.	Item no.71-1536



# Hycon Hydraulic Hammer



**Hycon Hydraulic Hammer**  
For piling of poles and plastic piles. The hydraulic hammer can be used with or without Pile Driver DM 350.

Delivered with hydraulic hoses and quick couplings. The brackets for plastic piles and poles are ordered separately.

Weight: 75 lbs  
**Item no.71-14500**

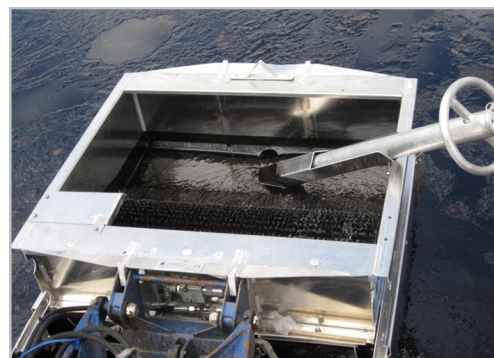


# Doro Skimmer DS 800



The Doro Skimmer DS 800 is a mobile combi skimmer that works in shallow waters from approx. 0,8 inch. When an oil spill has been contained with oil booms, the booms can be mounted to the Doro skimmer's bracket. As a result, the machine does not have to drive in the oil spill. The end covers of the Doro skimmer can be removed, which increases the capacity when the oil is thicker.

<b>Doro Skimmer DS 800</b>	Combined with Sala Roll Pump.
<b>Capacity:</b>	88 GPM (thick oil)
<b>Weight:</b>	52 kg
<b>Item no.</b>	79-5000



The Doro skimmer is equipped with a bracket where the suction tubing (Sala Roll Pump) is placed.



The Doro skimmer can be used with or without Sala Roll Pump. The Doro skimmer holds approx. 5,3 gal.

## Sala Roll Pump



The Sala Roll Pump is suitable for decontamination of thick-flowing and polluted matter in places that are difficult to reach. The suction tubing can be placed in the Doro skimmer or used manually.

The Sala Roll Pump can either suck or pump just by changing the rotation of the pump. This is useful for example, when the Doro tank is to be emptied. The strong vacuum ensures excellent suction capacity. The high pressure makes it possible to transport the matter over long distance.

The Sala Roll Pump can be used alone with a suction nozzle or in combination with Doro Skimmer DS 800.



<b>Capacity:</b>	53 gpm
<b>Weight:</b>	291 lbs
<b>Working pressure:</b>	86 PSI
<b>Max. pressure:</b>	128 PSI
<b>Technical vacuum:</b>	-13.8 PSI
<b>Sala Roll Pump Item no.</b>	79-3000

### Sala Roll Pump accessories:

Cleaning of oil spills: suction tubing, 13,1 ft with suction hose 2,6 inch, 4 quick couplings Ø 2,6 inch, 88,6 inch pressure hose 2,56 inch, 1 frame bracket.

**Item no. 79-3002**

Flat tubing 3 inch delivered in 54.7 yd

**Item no. 78-11876**

Camlock, female, **Item no. 78-562676**,

Camlock, male, **Item no. 78-564676**,

Hose clip 3 inch **Item no. 01-30474**



## Doro Tank



The conditions for cleaning up oil spills vary depending on the environment. During the final phase of the work there are usually small areas of oil where it is practical to collect the oil in a mobile tank.

**The Doro tank** is mounted between the pontoons and is supplied with couplings that can be easily mounted to the Sala Roll Pump. When using the Sala Roll Pump to empty the tank it pumps out the oil via the suction tube. The Doro tank is used in combination with the Sala Roll Pump and Doro Skimmer 800.

### Doro Tank

<b>Volume:</b>	52,8 gal
<b>Weight:</b>	52,9 lbs
<b>Item no.</b>	79-6000

## Doro Spreader



With **the Doro Spreader DM 1000** spreading oil-absorbing materials is easy. The oil absorbents limit the damage caused by oil that is spilled into the water. The rotating spreader head, controlled from the operator's seat, is used to adjust the amount of absorbent materials to be delivered.

The Doro Spreader DM 1000 has a central divider which makes it possible to use half the working depth. The Doro Spreader DM 1000 can be used with most types of absorbents

### Doro Spreader

<b>Weight:</b>	146	lbs
<b>Load volume:</b>	264	gal
<b>Max. load weight:</b>	396	lbs
<b>L:</b>	3	ft
<b>W:</b>	6,6	ft
<b>H:</b>	2,6	ft
<b>Item no.</b>	79-15700	



## Trailer Variant 2700U5



The Trailer Variant 2700U5 is a trailer specially adapted for transporting Truxor.

The Trailer Variant 2700U5 is delivered with straps, collapsible sides of aluminium, hydraulic tipper, foldable rear ramp with gas springs that facilitate the raising and lowering of the ramp. Guide rails facilitate the loading and unloading of the machine.



### Trailer technical specifications

Loading platform dimensions:	17.06x6.9 ft
Total length:	21,82 ft
Loading platform height:	1,97 ft
Service weight:	1940 lbs
Total weight:	5952 lbs
Load capacity:	4012 lbs
Wheels:	195/50-13
Item no.	75-5200

## Tilt Bracket



The hydraulic tilt bracket is a Truxor DM 5000/5045 accessory. The tilt bracket mounted on the lifting arm facilitates the work and increases the precision of the tool when working sideways.

The tilt bracket makes it possible to angle the cutter and rake, thus cutting and collecting plants in places that are difficult to access. The tilt bracket can be adjusted by up to  $\pm 30$  degrees.



Tools that can be combined with the tilt bracket: Doro cutter 3090 /3091, Doro cutter ESM 2100, Doro cutter ESM 2200, Reed rake, standard, Doro miller and Doro skimmer.

**Weight:** 35,27 lbs  
**Item no.** 94-101800K

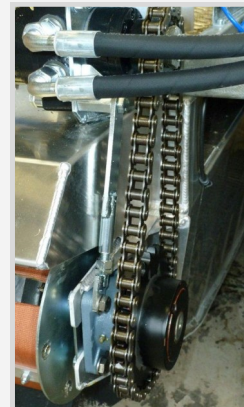
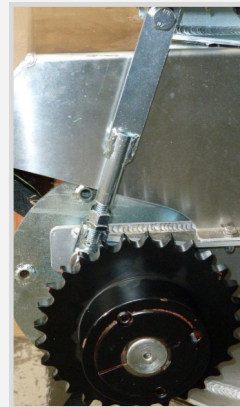




### Air transport

If necessary, additional tools or accessories can be loaded on the machine with the help of the transport platform which is mounted on the transport bracket of the reed rake. Made of aluminium.

**Weight:** 8,8 lbs  
**Max load:** 132,2 lbs  
**Size (LxWxH):** 31.5x12.2x11.8 inch  
**Volume:** 18,5 gal  
**Item no.** 94-104500



### Chain gear

Machines used in wetlands become more manoeuvrable if the gear speed is higher. The Chain gear is recommended only when the machine is used in wetlands and in combination with the tools we recommend. With normal use in water, on land and in wetlands, it does not require higher gear speed. Drive chains and chain sprockets (bigger) are included.

**Weight:** 22 lbs  
**Item no.** 94-104400



### Rear DM bracket

The Tiltable bracket is for fast tool mounting. Used for the propeller and rake with sprung pins. Hydraulic outlet included.

**Weight:** 61,7 lbs  
**Item no.** 94-66000



### Propeller operation

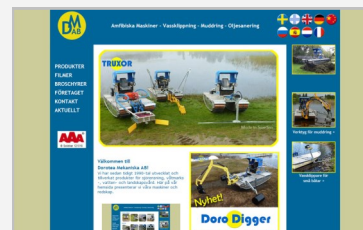
Increases the speed in water. Recommended for transport and in combination with certain tools.

The propeller should not be used together with the reed cutter or Doro Digger. The engine speed of the propeller is controlled from the operator's seat. The propeller is controlled using caterpillar tracks. Delivered with a stone release system. A rear DM bracket must be installed (not included).

Speed in water, max. 4,8 mph  
 Propeller diameter 13 inch.

**Weight:** 55 lbs  
**Item no.** 91-104200





You will always find the latest news on our website! Pictures, films, brochures etc. A list of our distributors can be found under Contact in the side menu.  
[www.doroteamekaniska.se](http://www.doroteamekaniska.se)



We specialise in lake cleaning, as well as maintenance of wetlands and waterways. Since 1990 we have been delivering, manufacturing and developing products, turning innovative thinking into reality.

Today, we have the widest range of lake maintenance machines in Sweden, and probably in the world too. We offer everything from the small and simple reed cutter to the professional machine for reed cutting, dredging, oil spill clean-up, digging, piling etc.

Excellent quality and performance have always been our top priority and over time we have gathered experience and skills that we are happy to share with our customers.

The Dorotea factory is the centre of production, spare parts and sales. We have customers and distributors all over the world. Spare parts for our products can be obtained from us or from our major distributors.

*The manufacturer reserves the right to make changes to the technical specifications and product range.*

#### DISTRIBUTORS:

Hockney Underwater Weed  
Cutters, inc.  
P.O Box 414  
Delavan, WI 53115-0414  
Phone: (262) 215-6037 Mobile: (262) 740-  
9000  
[www.TruxorUSA.com](http://www.TruxorUSA.com)



#### MANUFACTURING/SALES:

Dorotea Mekaniska AB  
Östra Polarvägen 10  
917 32 Dorotea  
0942-258 80  
[www.doroteamekaniska.se](http://www.doroteamekaniska.se)