

PROMAC

RGP | Rotary General Purpose Brush Cutter

Actual attachment may differ from image shown.



RGP 36 shown in image with optional flat top pusher pad

The industry standard.

The Rotary General Purpose (RGP) Brush Cutter has features desired by operators for a variety of applications ranging from cutting long grass to taking down trees and branches up to 6" in diameter. This model features a rotor with hinged, heat-treated cutting blades, which make for a variable finished product size. The Light Duty RGL 36 is suitable for operators with mini-excavators that require a forestry-grade brushcutter.

STANDARD FEATURES

- Available in 36 and 52" disk sizes
- Fully machined disk with three high strength steel blades
- Heavy-duty fully welded structural frame design
- Shroud doors on each side of the brush cutter provide multiple cutting options
- Engineering and design services to match the customer's auxiliary hydraulic flow to attain the desired disk operating speeds
- Renowned Promac warranty, service and support
- Suitable for 5-30+ ton excavators

Rotary brushcutters for 15-30+ ton excavators

SPECIFICATIONS	Excavator size (tons)	Cut width	Approx. weight (lbs)	Color	Motor size (cc)	Motor type	Flow min (GPM)	Flow pressure min (PSI)	Disk type	Disk max speed (RPM)	Standard blade thickness
RGL 36	Min: 5 Max: 12	36"	1000	Grey/blue	45	Bent axis piston	15	4000	RGP	1800	1/2"
RGP 36	15+	36"	1800	Grey/blue	80	Bent axis piston	28	4000	RGP	1800	3/4"
RGP 52	18+	52"	2200	Grey/blue	107	Bent axis piston	40	4000	RGP	1800	3/4"



Customization to suit your excavator

Optional Add-ons:

- ✓ Pin type or quick-change brackets
- ✓ Pusher pads
- ✓ Bucket teeth that can be configured for thumb use
- ✓ Standard integral pusher pad with flat top on the light duty RGL 36



Industry Proven Hydraulic Motors

- ✓ High efficiency bent axis piston motors
- ✓ Available variable displacement motor reduces recovery times and increases torque when you need it most



Integrated rear debris shield

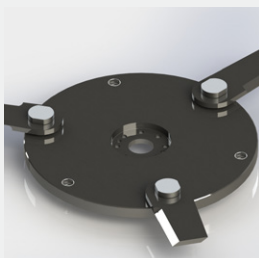
- ✓ For enhanced operator protection
- ✓ Right hand door allows more access to the disk versus competitors single opening



Unparalleled drivetrain

The heart of all Promac rotary brushcutters is our 'forestry-rated' bearing assembly:

- ✓ High strength alloy steel components throughout
- ✓ Elastomeric isolation coupler to reduce shock to the drive motor
- ✓ Dual, high capacity spherical roller bearings
- ✓ Built for production



Rotary General Purpose (RGP) Disk

- ✓ Fully machined high strength alloy steel to a thickness of 1 1/2"
- ✓ Abrasion resistant alloy steel blades and hardware designed to keep you working longer